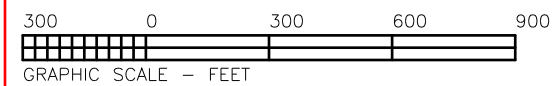
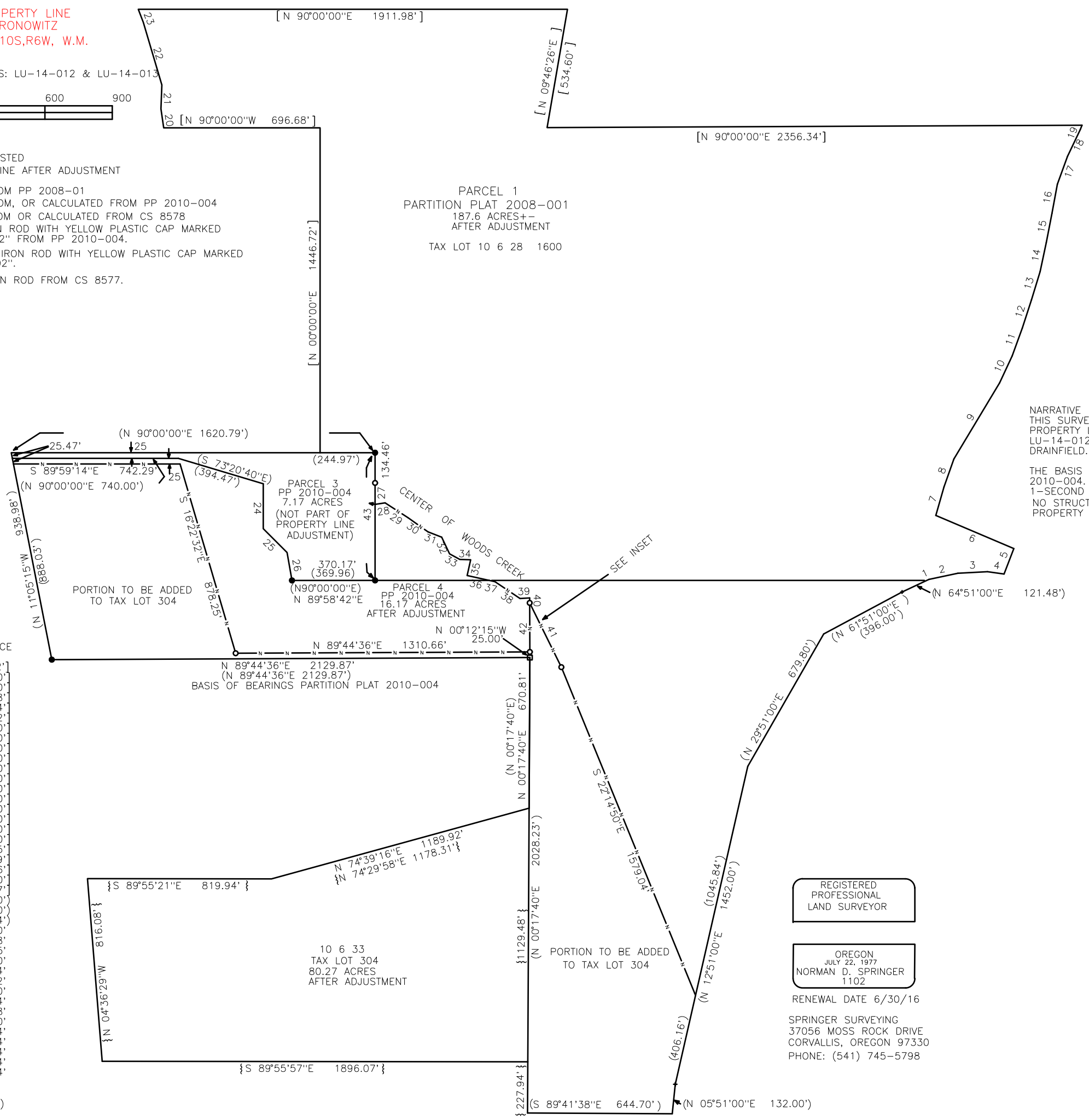
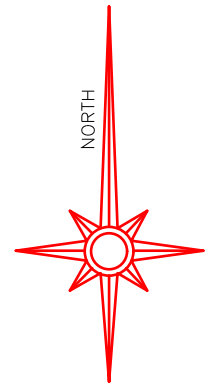


RECORD OF SURVEY/PROPERTY LINE
ADJUSTMENT FOR ALAN ARONOWITZ
IN S. 1/2 SECTION 28, T10S,R6W, W.M.
MARCH 14, 2014

COMMUNITY DEVELOPMENT FILES: LU-14-012 & LU-14-013



- LEGEND
- LINE TO BE ADJUSTED
 - - - NEW PROPERTY LINE AFTER ADJUSTMENT
 - PP PARTITION PLAT
 - [] RECORD DATA FROM PP 2008-01
 - () RECORD DATA FROM, OR CALCULATED FROM PP 2010-004
 - { } RECORD DATA FROM OR CALCULATED FROM CS 8578
 - FOUND 5/8" IRON ROD WITH YELLOW PLASTIC CAP MARKED "SPRINGER LS1102" FROM PP 2010-004.
 - SET 5/8" X 30" IRON ROD WITH YELLOW PLASTIC CAP MARKED "SPRINGER LS1102".
 - FOUND 5/8" IRON ROD FROM CS 8577.



COURSE	BEARING	DISTANCE
1	(N 64°51'00"E)	[10.52']
2	(N 78°00'00"E)	132.00'
3	(N 87°00'00"E)	132.00'
4	(S 82°00'00"E)	74.58'
5	(N 21°00'00"E)	121.44'
6	(N 67°00'00"W)	377.52'
7	(N 16°00'00"E)	132.00'
8	(N 19°30'00"E)	132.00'
9	(N 31°00'00"E)	396.00'
10	(N 25°00'00"E)	132.00'
11	(N 20°00'00"E)	132.00'
12	(N 18°00'00"E)	132.00'
13	(N 17°00'00"E)	132.00'
14	(N 12°00'00"E)	132.00'
15	(N 11°00'00"E)	132.00'
16	(N 10°30'00"E)	132.00'
17	(N 20°00'00"E)	132.00'
18	(N 25°30'00"E)	132.00'
19	(N 22°00'00"E)	21.25'
20	(N 08°15'16"W)	85.39'
21	(N 02°11'59"E)	106.46'
22	(N 16°30'20"W)	290.40'
23	(N 21°00'15"W)	62.77'
24	(S 00°00'00"E)	200.00'
25	(S 45°00'00"E)	150.00'
26	(S 10°00'00"E)	126.34'
27	(S 00°00'26"E)	95.50'
28	(N 81°26'43"E)	45.18'
29	(S 57°05'37"E)	121.35'
30	(S 54°40'37"E)	109.10'
31	(S 68°42'59"E)	65.64'
32	(S 25°20'52"E)	82.12'
33	(S 61°24'31"E)	52.30'
34	(S 88°26'31"E)	48.04'
35	(S 12°35'05"W)	71.88'
36	(S 77°32'02"E)	101.10'
37	(S 77°32'02"E)	25.74'
38	(S 56°06'52"E)	134.54'
39	(N 86°35'45"E)	43.04'
40	(S 00°12'15"E)	22.04'
41	(S 26°14'48"E)	319.04'
42	(N 00°12'15"W)	218.29'
43	(N 00°00'26"W)	568.60'
	(N 00°00'00"E)	568.55')

NARRATIVE
THIS SURVEY WAS DONE TO MONUMENT PORTIONS OF A
PROPERTY LINE ADJUSTMENT, PLANNING FILE NUMBERS
LU-14-012 & LU-14-013, AND MONUMENT AN EXISTING
DRAINFIELD. FOUND MONUMENTS WERE HELD AS SHOWN.

THE BASIS OF BEARINGS IS FROM PARTITION PLAT
2010-004. FIELD MEASUREMENTS WERE MADE WITH A
1-SECOND READING ELECTRONIC TOTAL STATION.
NO STRUCTURES ARE WITHIN 25 FEET OF THE ADJUSTED
PROPERTY LINES.

REGISTERED
PROFESSIONAL
LAND SURVEYOR

OREGON
JULY 22, 1977
NORMAN D. SPRINGER
1102

RENEWAL DATE 6/30/16

SPRINGER SURVEYING
37056 MOSS ROCK DRIVE
CORVALLIS, OREGON 97330
PHONE: (541) 745-5798